



GAT MONTHLY MEMBERSHIP PROGRESS REPORT

Results as of: 2/28/2022

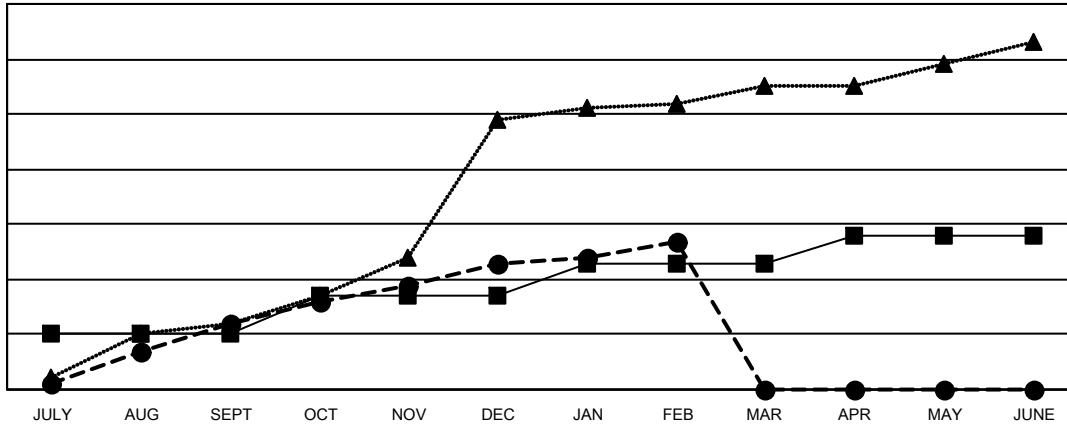
Multiple District 404

LOCATION: NIGERIA

| Clubs | | | |
|-----------------------|---------------|-----------|---------------|
| RESULTS FOR 2021-2022 | | | |
| QUARTER | NEW CLUB GOAL | NEW CLUBS | DROPPED CLUBS |
| JULY/AUG/SEPT | 10 | 12 | 3 |
| OCT/NOV/DEC | 7 | 11 | 6 |
| JAN/FEB/MAR | 6 | 4 | 1 |
| APR/MAY/JUNE | 5 | 0 | 0 |

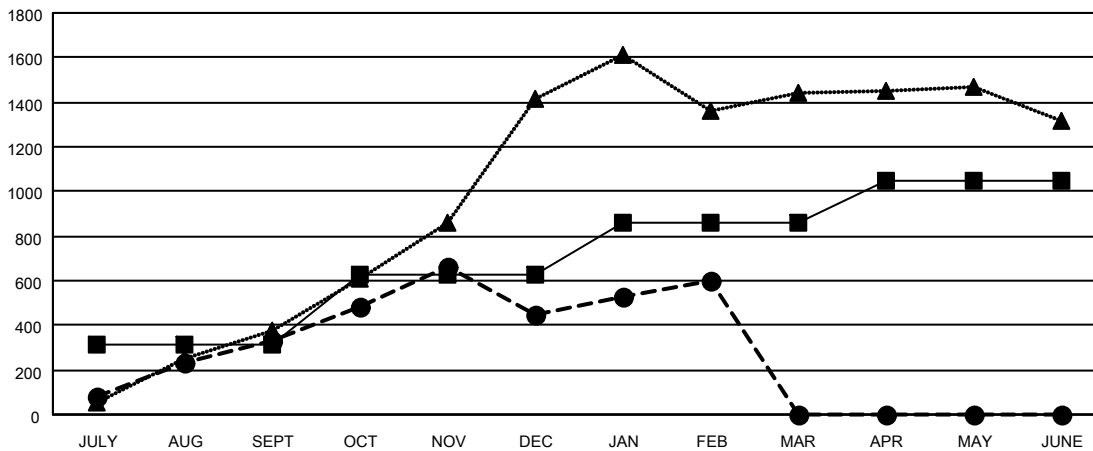
| Members | | | |
|-----------------------|------------------------|----------------------|--|
| RESULTS FOR 2021-2022 | | | |
| QUARTER | MEMBER GROWTH NET GOAL | MEMBER GROWTH ACTUAL | DROPPED MEMBERS ACTUAL (including transfers) |
| JULY/AUG/SEPT | 310 | 589 | 244 |
| OCT/NOV/DEC | 320 | 887 | 732 |
| JAN/FEB/MAR | 230 | 361 | 190 |
| APR/MAY/JUNE | 191 | 0 | 0 |

GOALS AND ACTUAL NEW CLUBS CUMULATIVE



- CURRENT YEAR GOALS FOR NEW CLUBS
- CURRENT YEAR ACTUAL NEW CLUBS
- ▲- LAST YEAR ACTUAL NEW CLUBS

GOALS AND ACTUAL MEMBERS CUMULATIVE



- MEMBER GROWTH NET GOAL
- MEMBER GROWTH ACTUAL
- ▲- LAST YEAR MEMBERSHIP ACTUAL

| | | |
|------------------------|---|--------------------------------------|
| DROPPED CLUBS: 10 | 266 CLUBS OF 389 ADDED 1 OR MORE NEW MEMBERS | GENDER DISTRIBUTION |
| DROPPED MEMBERS | CLICK HERE FOR CUMULATIVE MEMBERSHIP DATA | MALE 5,531 (57.52%) |
| DECEASED 29 | | FEMALE 4,084 (42.47%) |
| CLUB CANCELLED 224 | | NON BINARY 0 (0.00%) |
| OTHER 913 | | PREFER NOT TO ANSWER 1 (0.01%) |
| TOTAL 1,166 | | TOTAL FAMILY UNIT MEMBERS 862 |
| | | FAMILY MEMBERS PAYING HALF DUES 491 |